

HAMMELMANN[®]

High Pressure Pumps & Systems

HAMMELMANN GmbH | © 2023



Member of INTERPUMP GROUP

HAMMELMANN

COMPANY INTRODUCTION

1



- ▶ Founded 1949
- ▶ Located in Oelde, Germany
- ▶ Part of the Interpump Group, Italy

- ▶ Approx. 70 % export quota
- ▶ 40 Agents around the globe
- ▶ 430 Employees @HQ in Oelde
- ▶ > 500 Employees world-wide



- ▶ ISO 9001 Quality Management
- ▶ ISO 14001 Environmental Management
- ▶ ISO 50001 Energy Management
- ▶ OHSAS 18001 Health & Safety Management

Hammelmann Subsidiaries

HAMMELMANN®



USA
(www.hammelmann.us)



Australia
(www.hammelmann.com.au)



Spain
(www.hammelmann.es)



China
(www.hammelmann.cn)



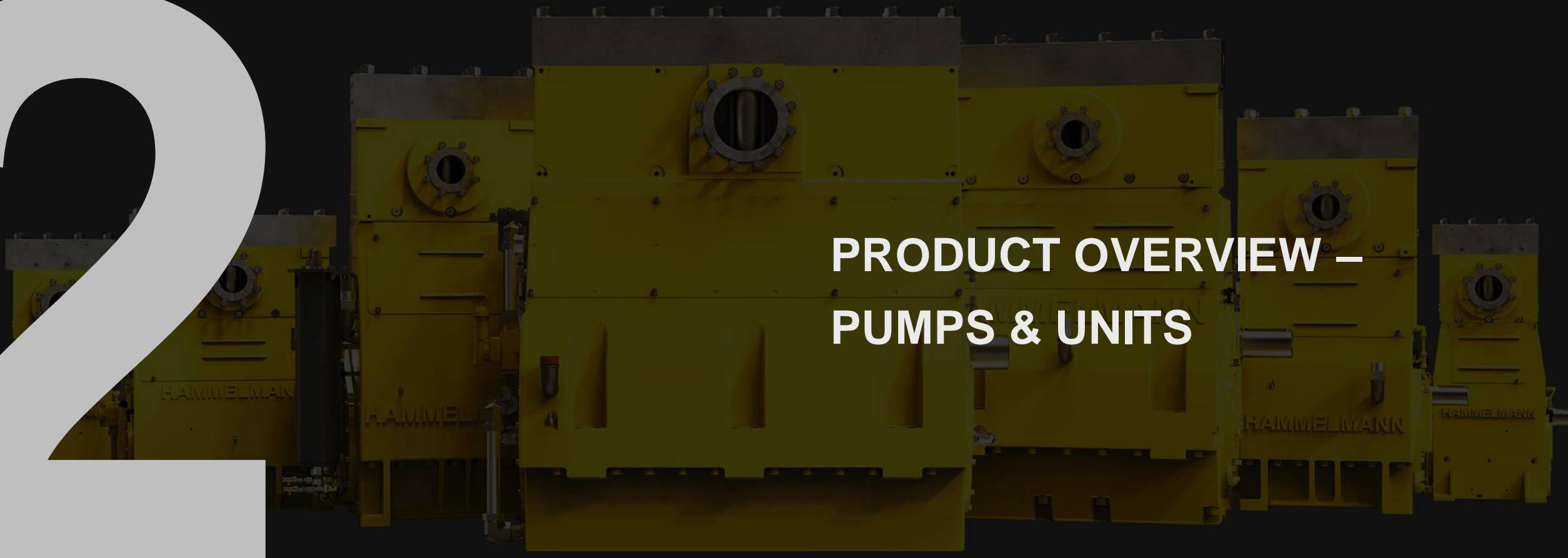
France
(www.hammelmann.fr)



Switzerland
(www.hammelmann-swiss.ch)

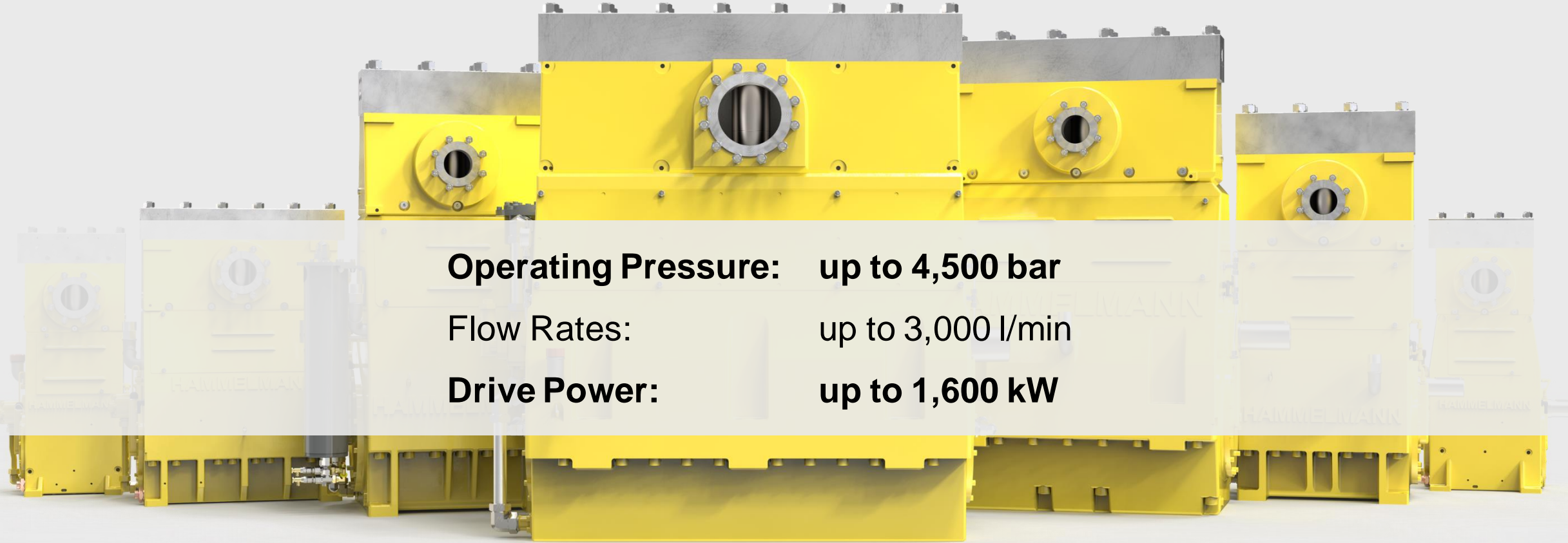


**PRODUCT OVERVIEW –
PUMPS & UNITS**



High-Pressure Pumps

HAMMELMANN®



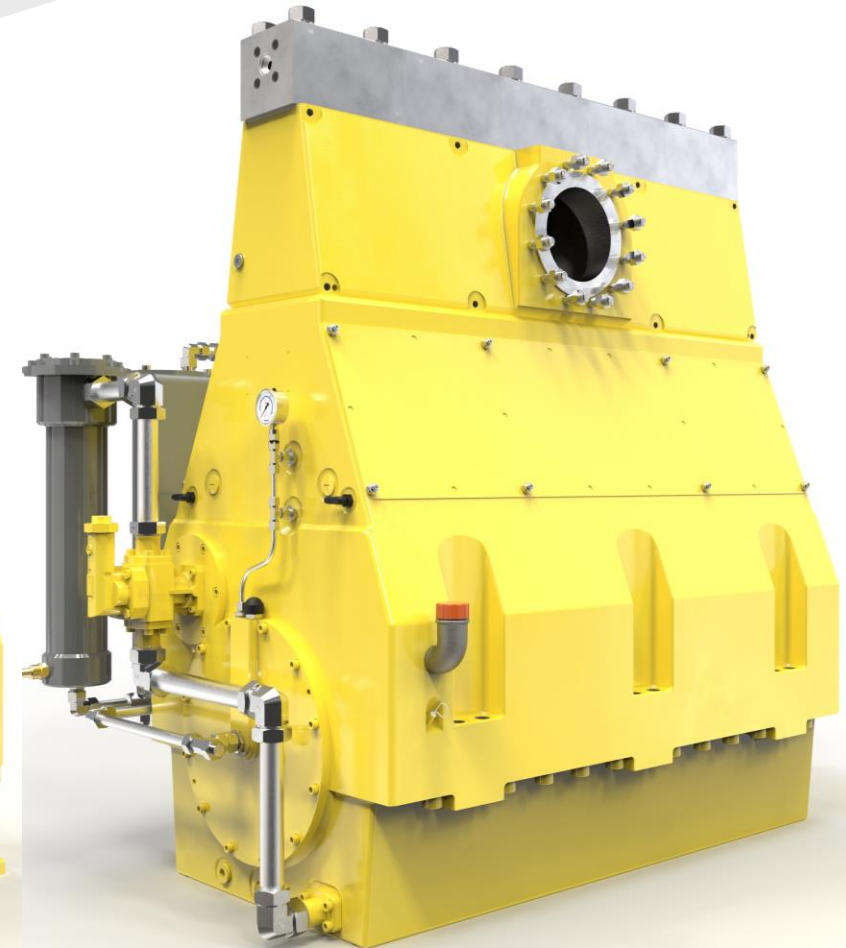
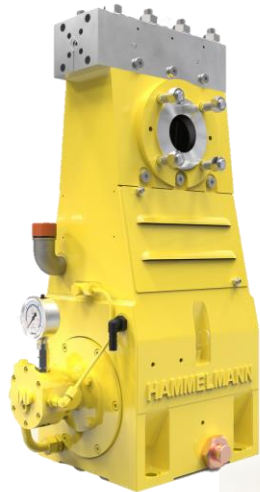
Operating Pressure: up to 4,500 bar
Flow Rates: up to 3,000 l/min
Drive Power: up to 1,600 kW

High-Pressure Pumps – bare shaft

HAMMELMANN®

20 kW

1600 kW



High-Pressure Pump Units

HAMMELMANN®



Aquajet® 14 trailer
26l/min @ 2800bar



Aquajet® 14 stationary
22l/min @ 3200bar | Tier-V Deutz engine

High-Pressure Pump Units

HAMMELMANN®



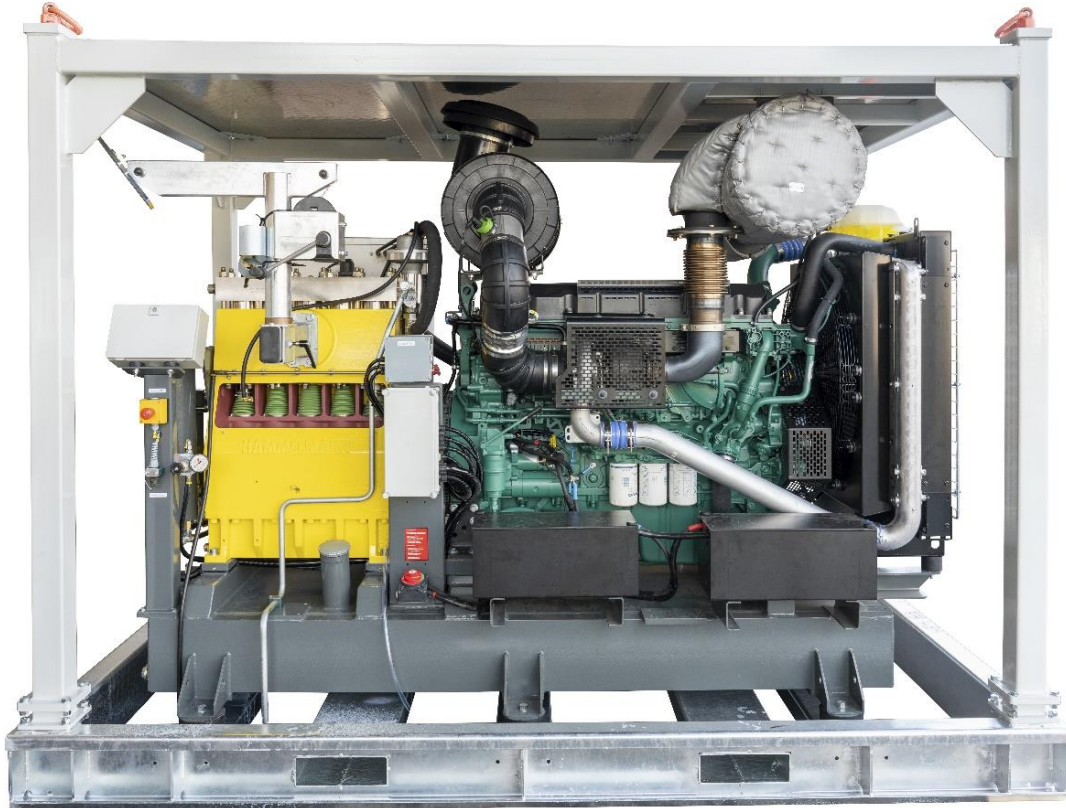
Aquajet® 20
28l/min @ 3200bar | sounddamped | lightweight



S1100-20
110l/min @ 1000bar on a heavy duty trailer

High-Pressure Pump Units

HAMMELMANN®



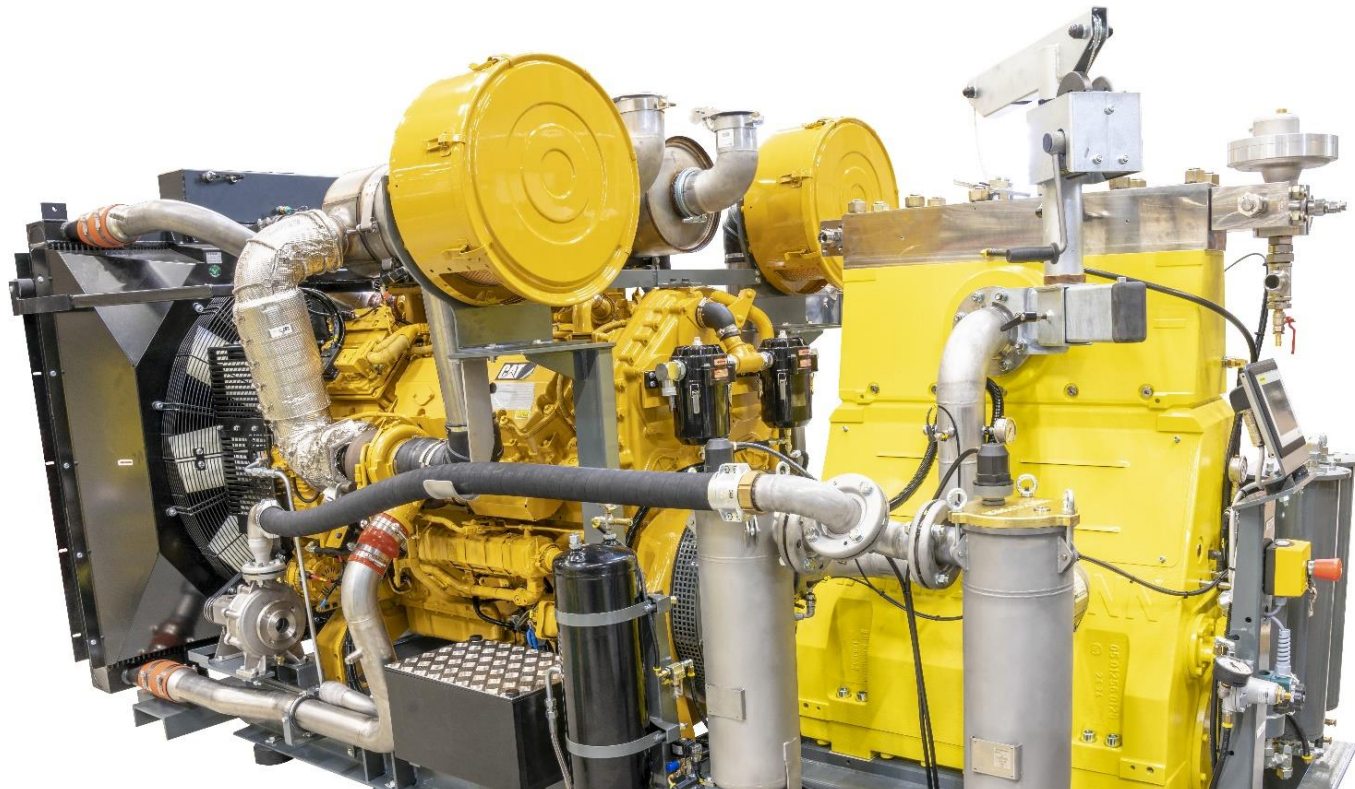
S1100-30
in crash frame | 145l/min @ 1100bar



S1100-50 basic unit
with 3-speed gear box | 262l/min @ 1040bar

High-Pressure Pump Units

HAMMELMANN®



the most powerful diesel pump unit world wide

S1600-80 basic unit
267l/min @ 1600bar



S1600-80 built in a 20ft container



Integrated pump unit controller

High-Pressure Pump Units – Electrically driven



High-Pressure Pump Units

HAMMELMANN®



Customized installations in trucks, container, trailers, etc....



UHP Pump Units for Waterjet Cutting

HAMMELMANN®

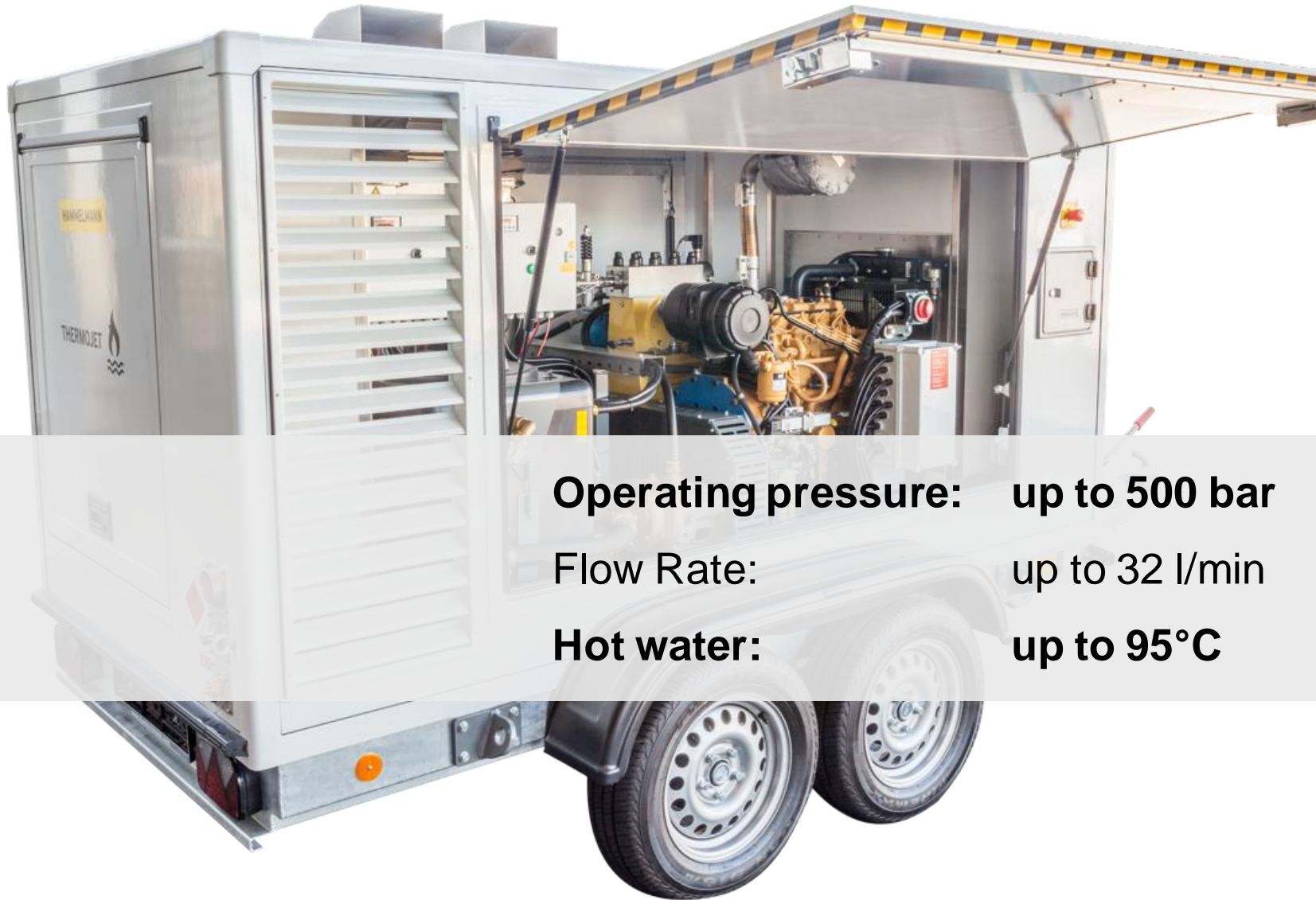


Up to 4000bar operating pressure
Flow / pressure control by a smart
VFD-system



Hot Water Applications – Thermojet

HAMMELMANN®



Operating pressure: up to 500 bar
Flow Rate: up to 32 l/min
Hot water: up to 95°C



3



**PRODUCT OVERVIEW –
WATER JETTING SOLUTIONS**

Rotor Jets – RD Masterjet

HAMMELMANN®



Rotor Jets – RD Masterjet

Wide range of models for any requirement



4-jet version

3200 bar | 50 l/min



6-jet version

3200 bar | 50 l/min



4-jet version “Low Flow”, specially
for low flow rates

3200 bar | 9.5 l/min

Rotor Jets – RD Masterjet – Pipe

Wide range of models for any requirement



6 nozzles
(radial, push and pull nozzles)
3200 bar | 50 l/min



6 nozzles
(radial, pull nozzles)
3200 bar | 50 l/min



6 nozzles
(radial, push and pull nozzles)
400 bar | 80 l/min

Wide range of spray guns & accessories



Mechanical, electrical
and/or bypass versions



A small lever with a
great effect

Ergonomical Support Units – Jet Line



Jetmate



Jetboy XL



Jetboy S



Jetboy L

Jetboy and Jetmate units allow for virtually effortless work. This results in a significantly greater area performance and less operator fatigue.

The units absorb the recoil forces of the waterjet and take force off of the operator.

AQUABLAST SURFACE CLEANERS

HAMMELMANN®



Aquablast® Basic E newest addition to product family

SURFACE CLEANING

HAMMELMANN®

Various types with or without direct vacuum system





AQUAREX® Vessel and Tank Cleaning

HAMMELMANN®



AQUAREX® Vessel and Tank Cleaning

HAMMELMANN®



AQUAMAT® Tank Cleaning Heads

HAMMELMANN®



AQUAMAT® Tank Cleaning Heads

HAMMELMANN®

Powerful range of solutions!



S 600
100l/min@600bar



L 1500
300l/min@1500bar



1800 plus
200l/min@1800bar



XL 1600 plus
400l/min@1600bar



XXL 1600
500l/min@1600bar

Rotating Hose Reels

HAMMELMANN®

Pipe Cleaning Equipment



Electrically driven unit



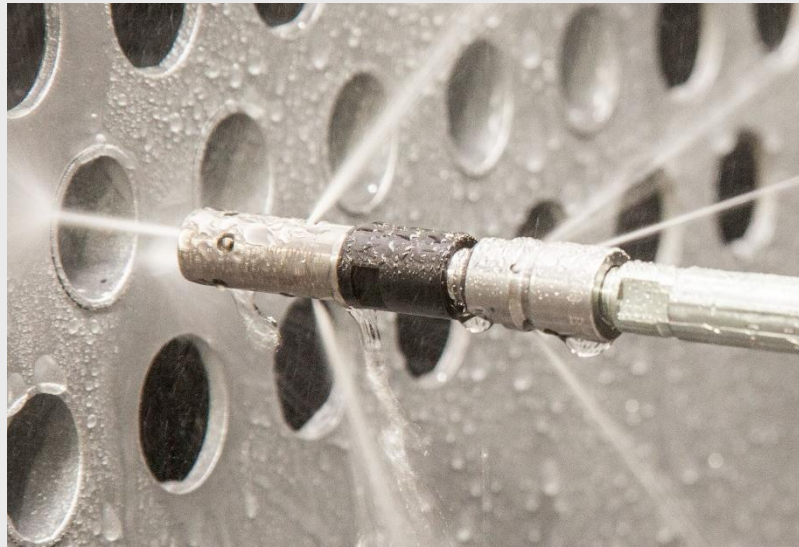
Pneumatic version



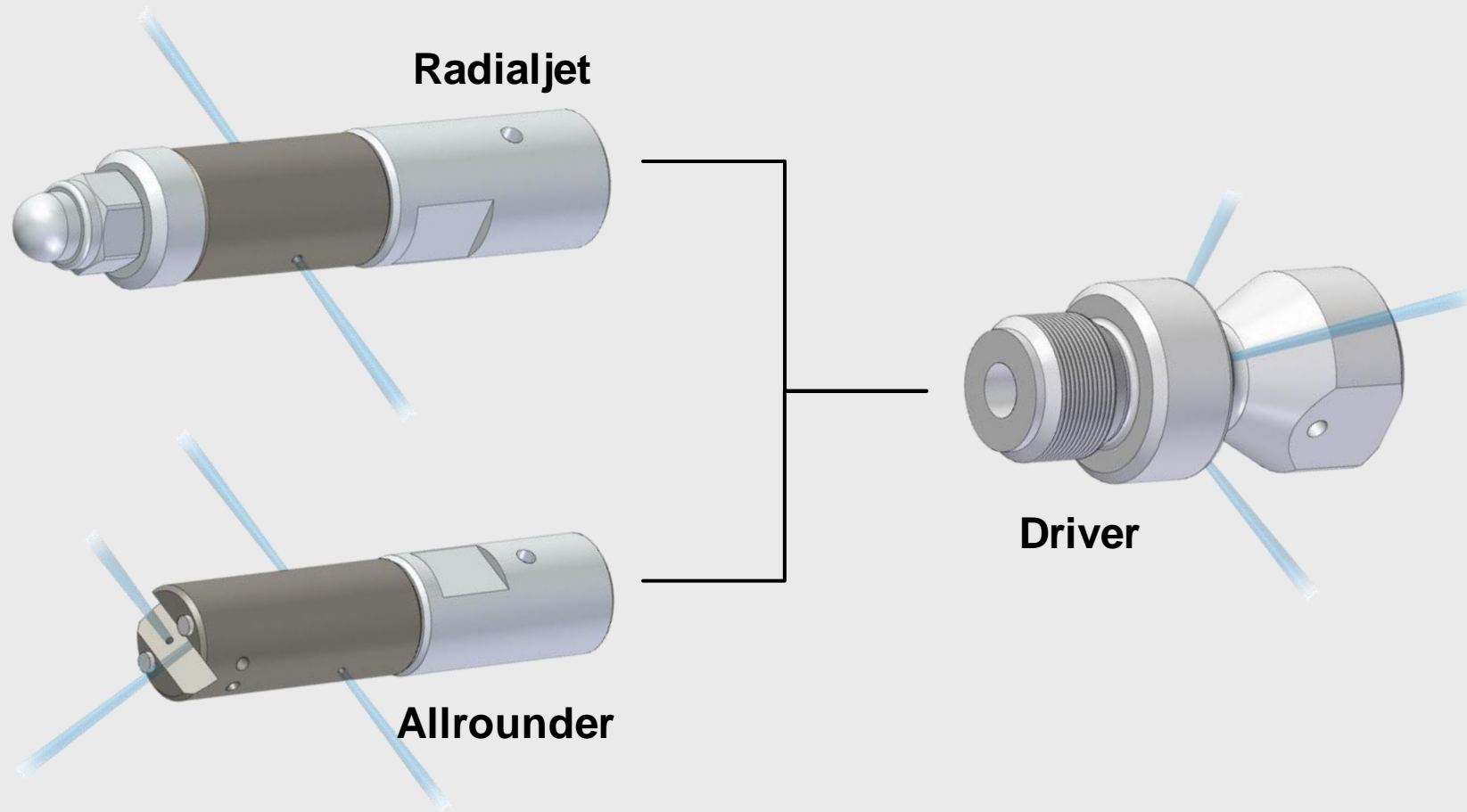
Hydraulic version



Nozzle types

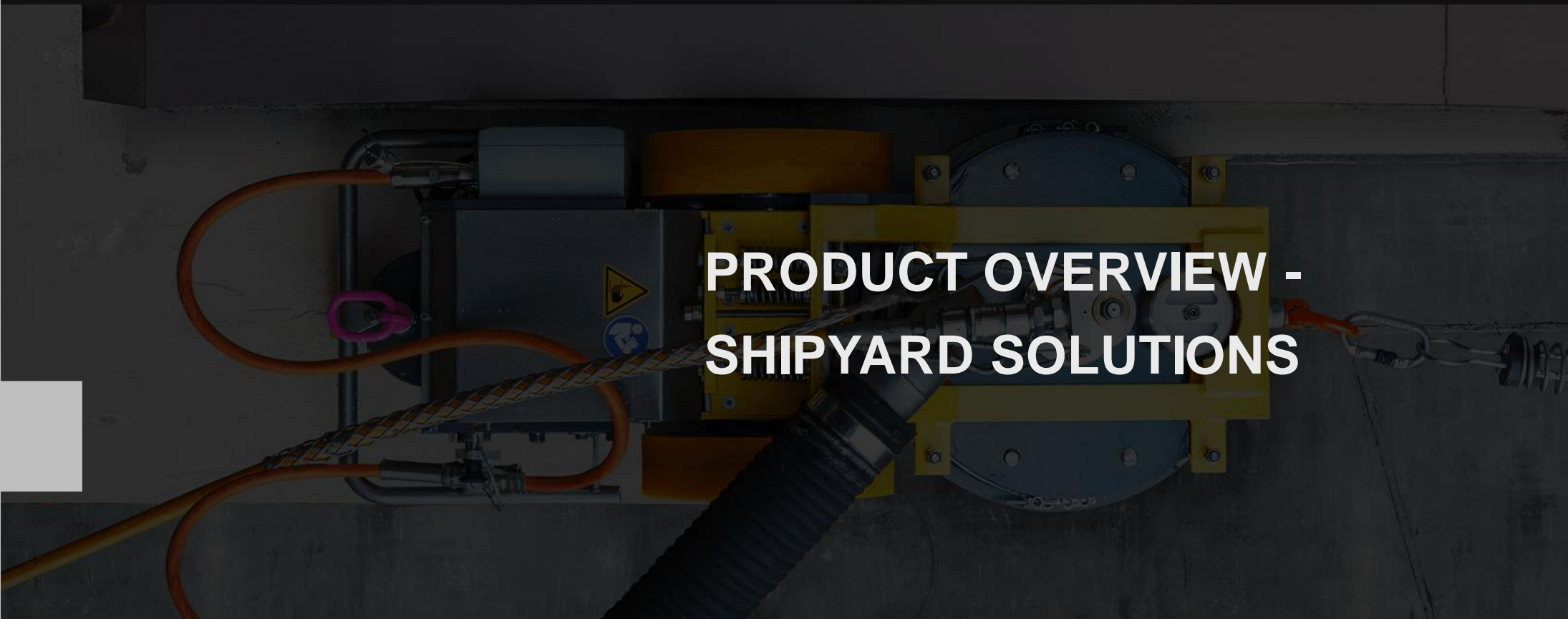


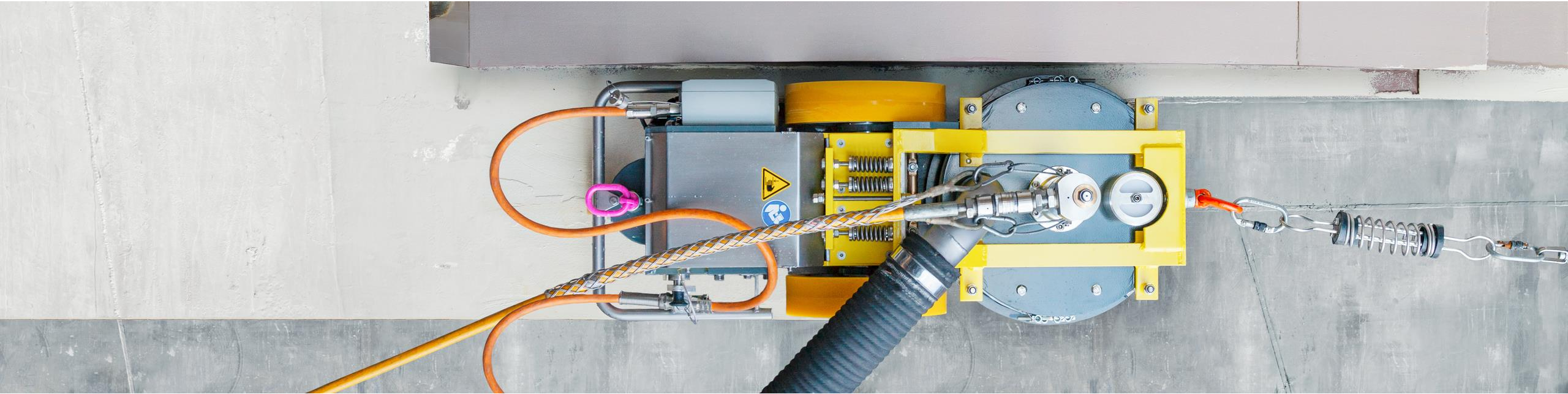
Nozzle types



4

**PRODUCT OVERVIEW -
SHIPYARD SOLUTIONS**





Spiderjet line



Spiderjet M & V



Spiderjet M Edge

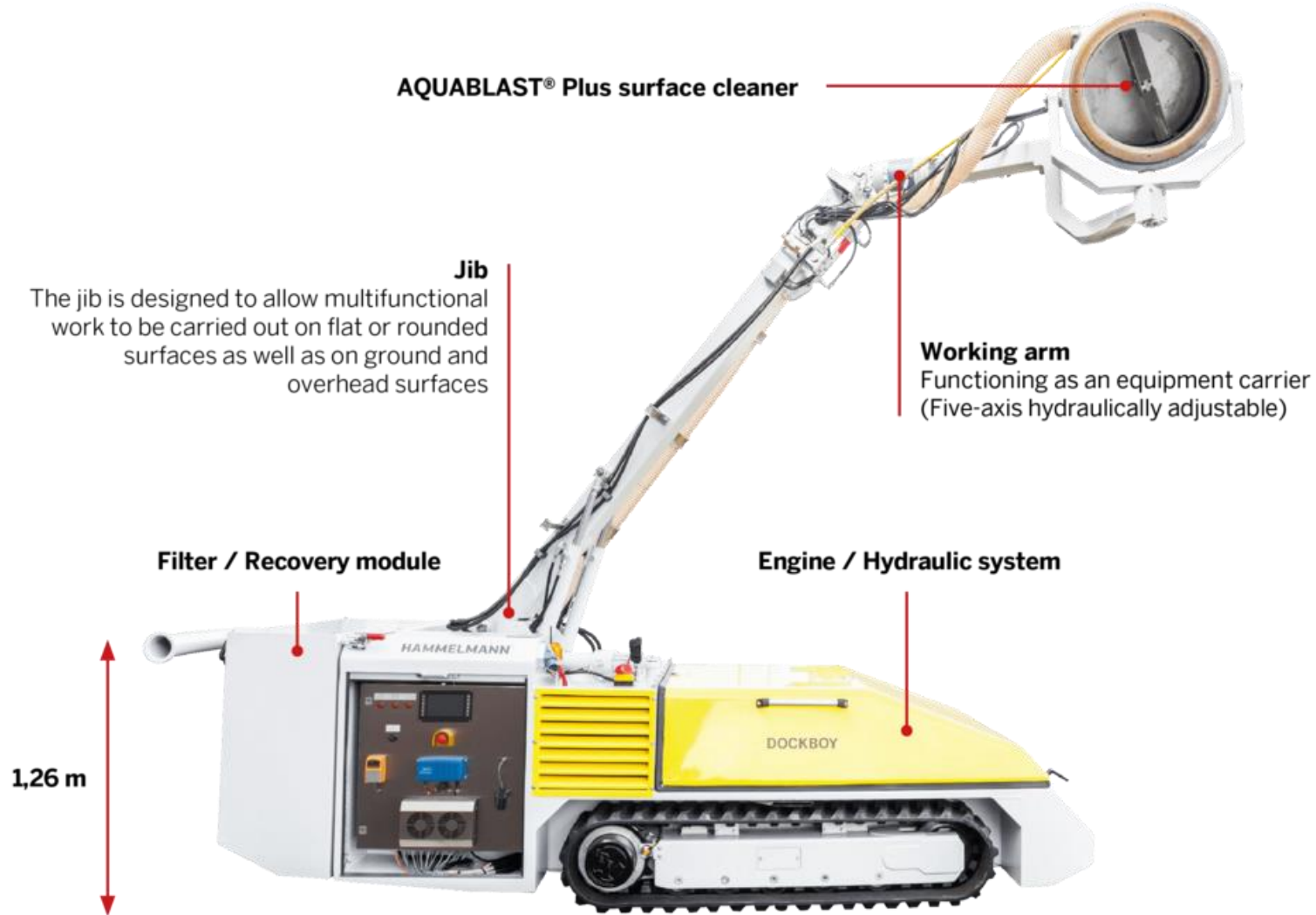
DOCKBOY

HAMMELMANN®



DOCKBOY – Diesel or electrical

HAMMELMANN®



up to 13 m
working height

up to 3,000 bar
operating pressure

Just 1.26 m
vehicle height

up to 47 l/min.
flow rate

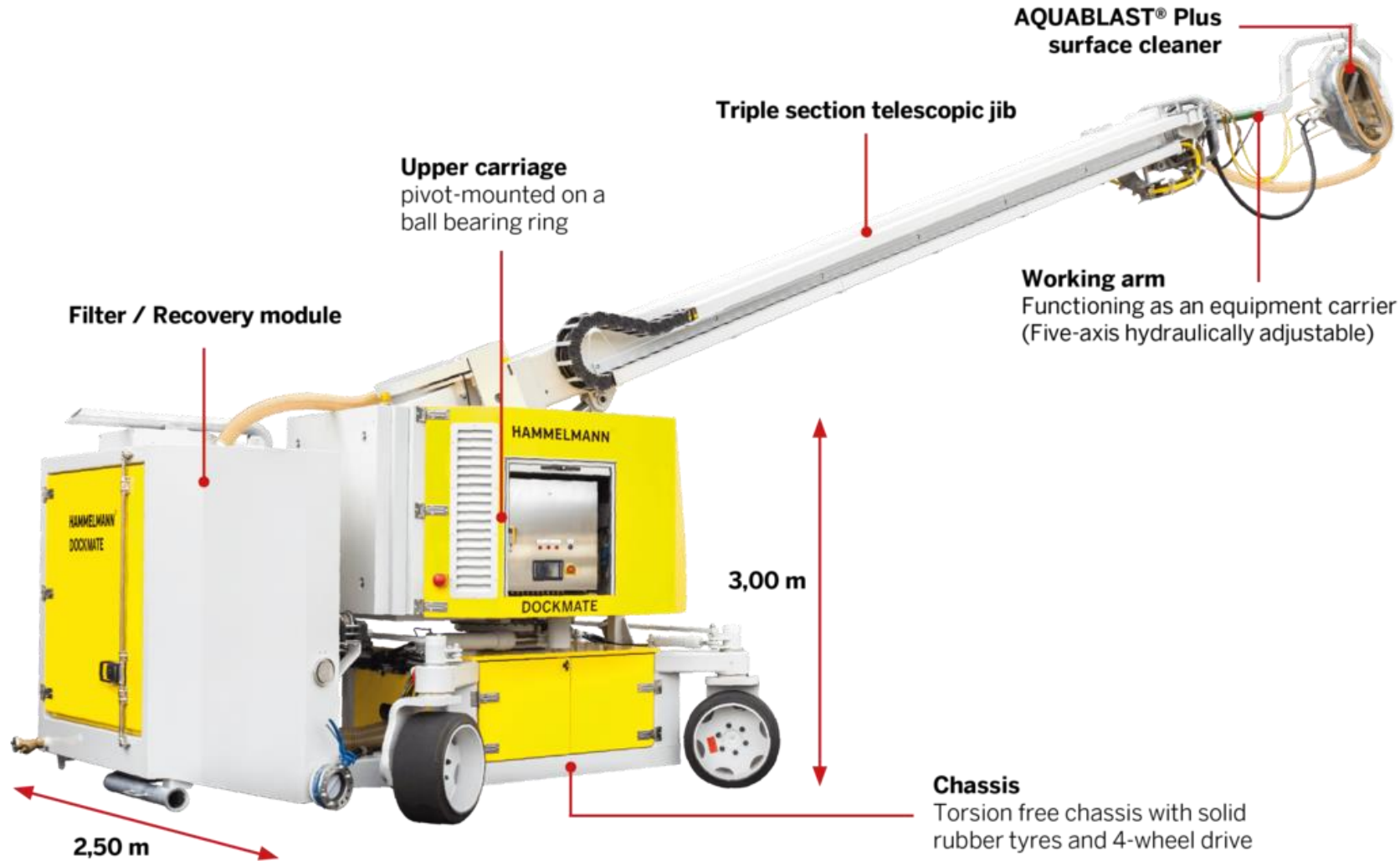
DOCKMATE

HAMMELMANN®



DOCKMATE – Diesel or electrical

HAMMELMANN®



up to 32 m
working height

up to 3,000 bar
operating pressure

up to 1 m
working width

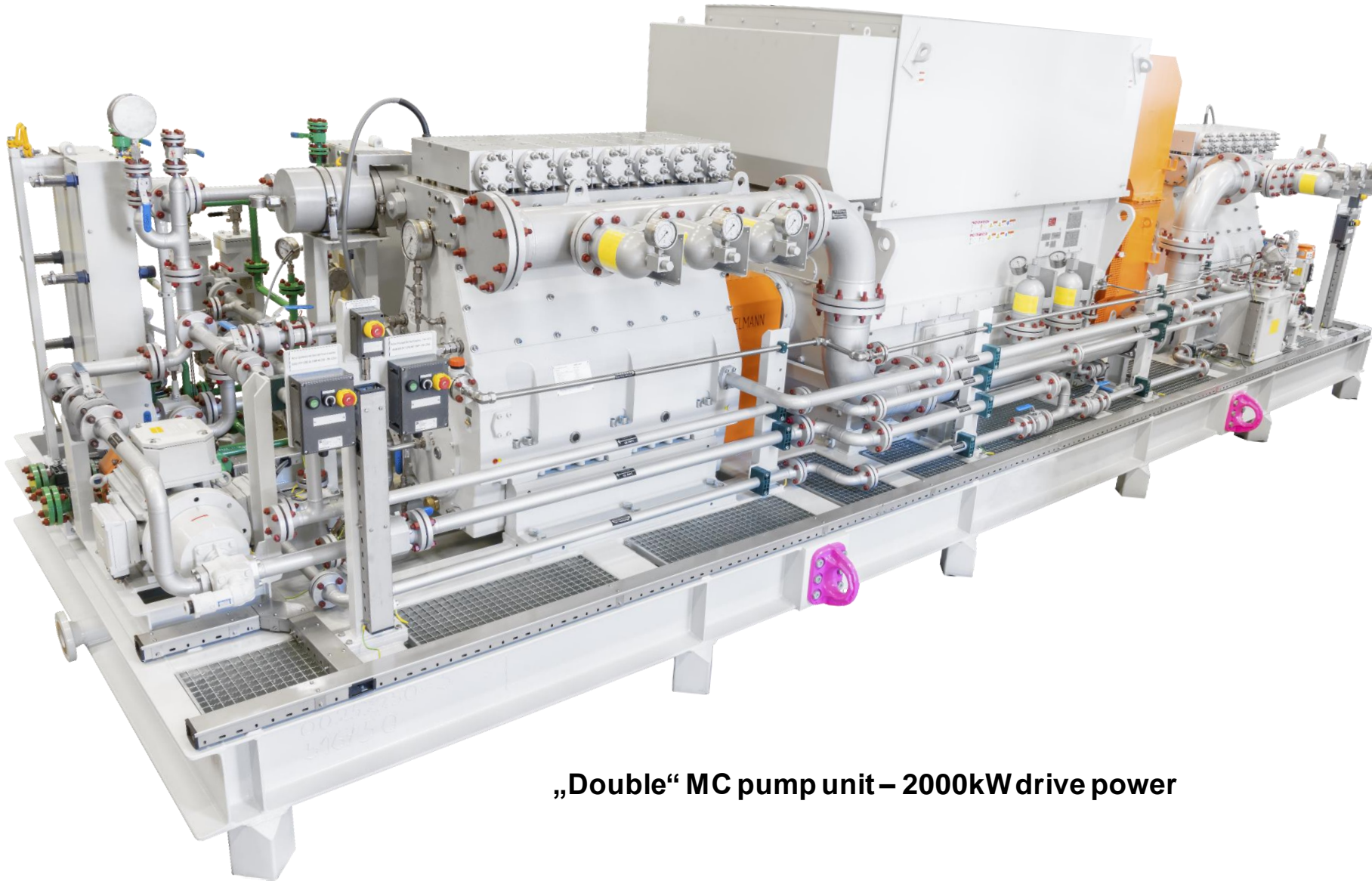
up to 94 l/min.
flow rate

**PRODUCT OVERVIEW –
PROCESS PUMPS**



Process Pumps

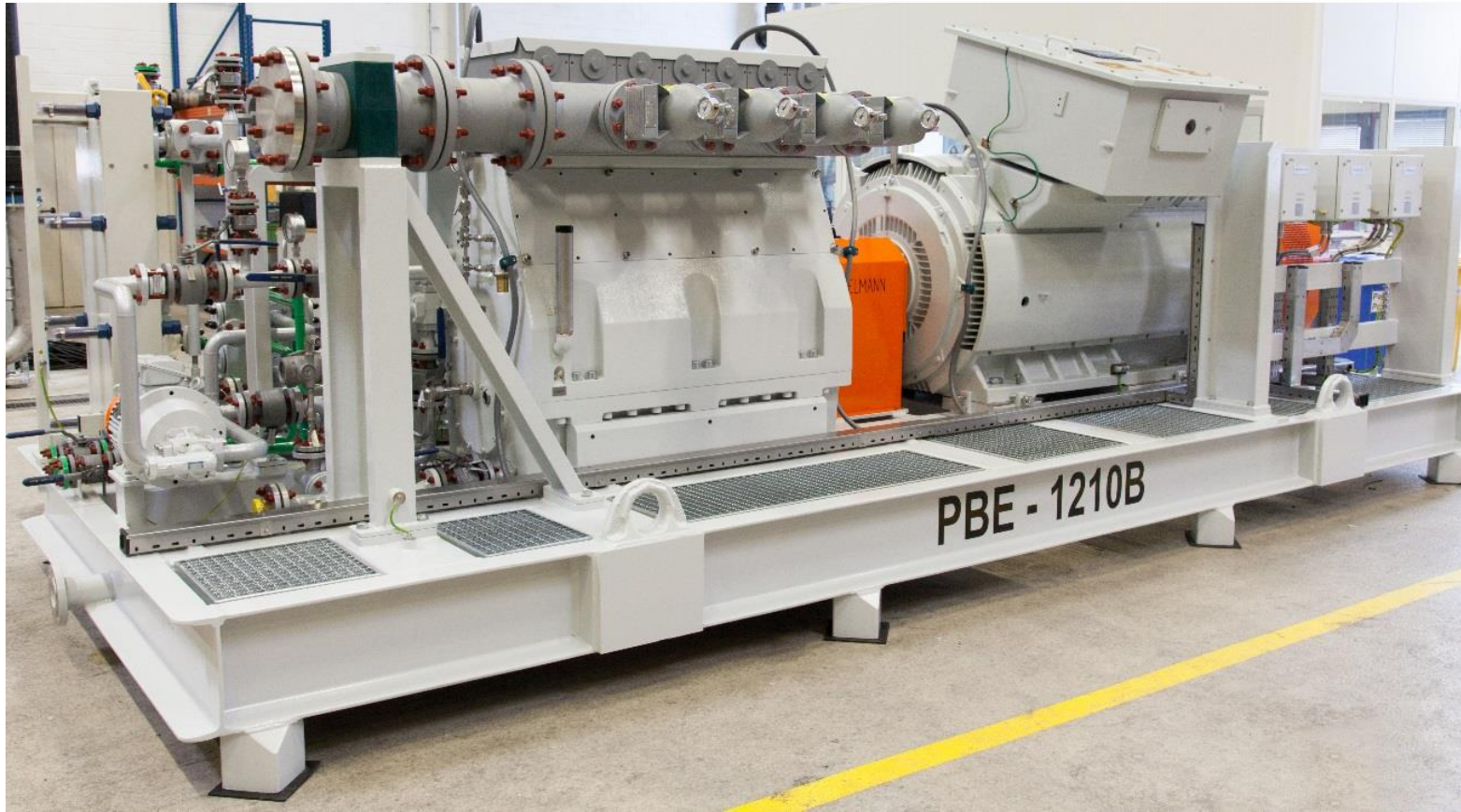
HAMMELMANN®



„Double“ MC pump unit – 2000kW drive power

Typical fluids are:

- ▶ Aggressive water
- ▶ Amine
- ▶ Carbon dioxide
- ▶ Diesel oil
- ▶ Ester
- ▶ Fatty acids
- ▶ Glucose
- ▶ Hot water
- ▶ Hydrocarbon
- ▶ Jet fuel
- ▶ Methanol
- ▶ Methyl ester
- ▶ Pentane
- ▶ Propylene
- ▶ Process water
- ▶ Salt water
- ▶ Scale squeeze



- Flow rates:** up to 180 m³/h
up to 47,000 gph
up to 3000 l/min
up to 790 gpm
- Op. Pressure:** up to 3800 bar
up to 55,000 psi
- Power ratings** up to 1100 kW
up to 1500 HP
- Fluid viscosity** 0,1 to 2000 mPas
- Op. Temp.** - 40 to + 200 °C
- 40 to + 392 F

DESCALING

HAMMELMANN®

BAOSTEEL Shanghai

5 pcs.

High Pressure Pumps HAMPRO
802

Flow rate 730 l/min

Pressure 400 bar

Power rating 550 kW





Production of TBA *Tri-butyl amin*

Process data :

Pressure : 250 bar

Flow rate : 500 l/min

Inlet pressure : 30 bar

Temperature : 80 °C



- **Fluid:**
Liquid Ammonia
- **Pump data:**
390 bar / 5.656 psi
34,8 m³/h / 153 gpm
- **Function:**
Pumping liquid ammonia with
high suction pressure (liquid state)
- **Advantages:**
Zero Emission System
Liquid barrier system

6



APPLICATIONS

APPLICATIONS – Heat Exchanger Cleaning

HAMMELMANN®



APPLICATIONS – Heat Exchanger Cleaning

HAMMELMANN®

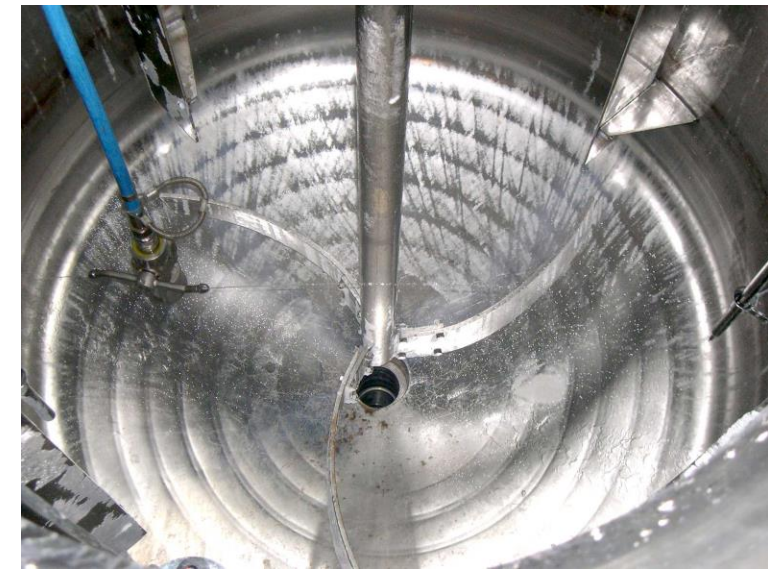


APPLICATIONS – Pipe Cleaning



APPLICATIONS – Tank & Vessel Cleaning

HAMMELMANN®



Tailor-made solutions
to meet any individual
requirements

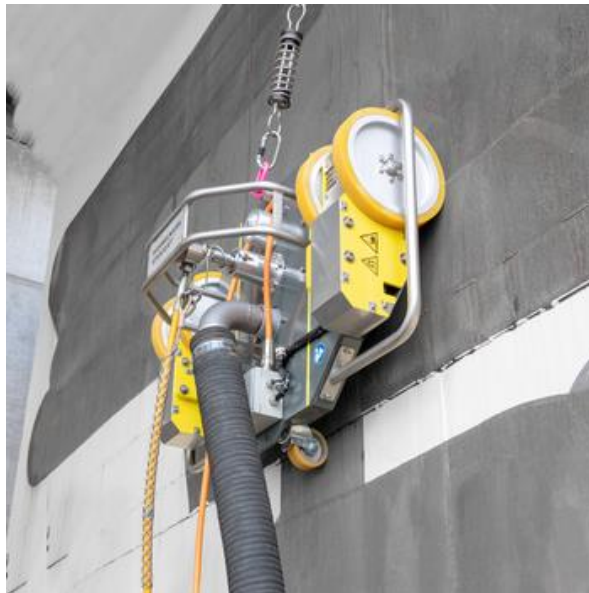
APPLICATIONS – Hydro Demolition

HAMMELMANN®



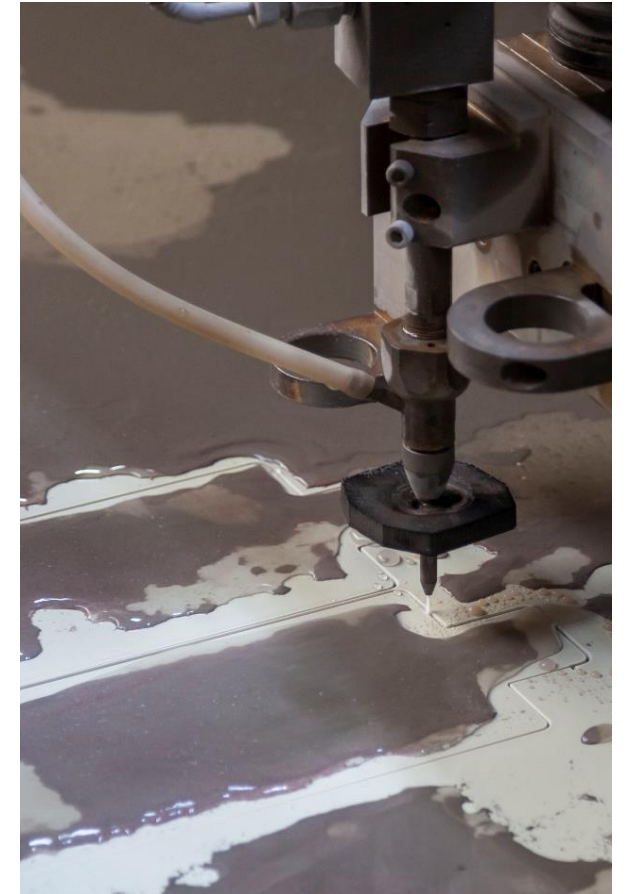
APPLICATIONS – Shipyards

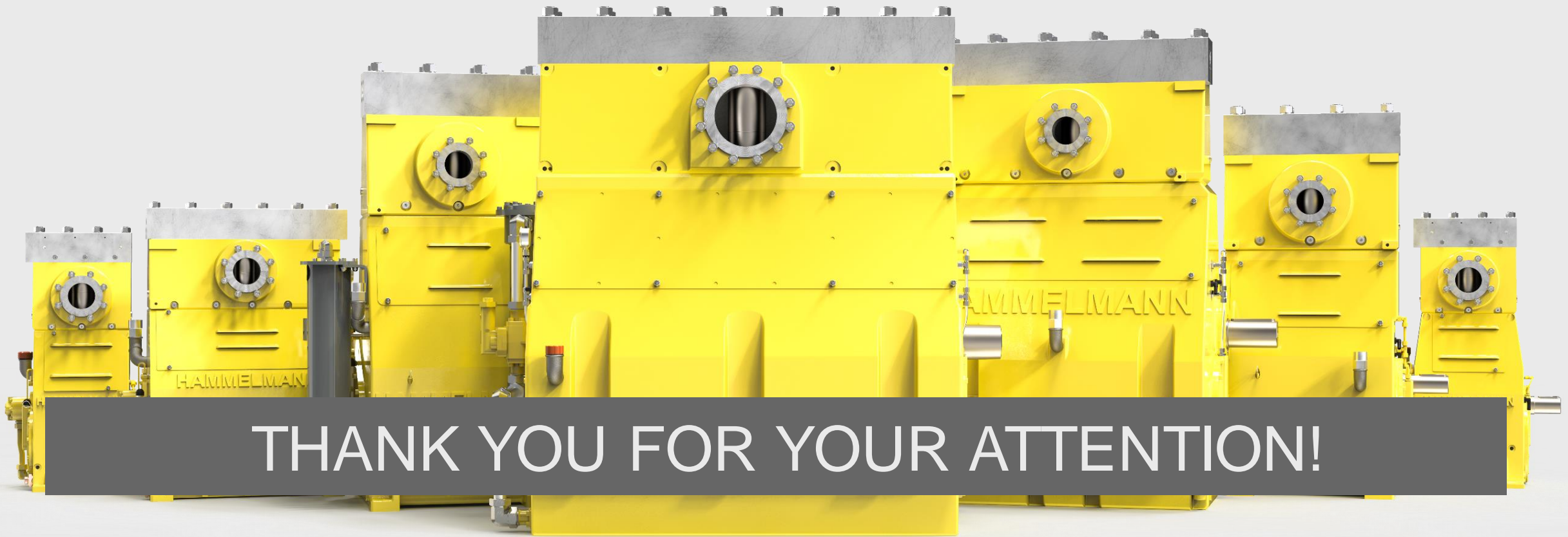
HAMMELMANN®



APPLICATIONS – Water-jet Cutting @ 4500 bar

HAMMELMANN®





THANK YOU FOR YOUR ATTENTION!